



NIC

**NIPPON
INSTRUMENTS
CORPORATION**



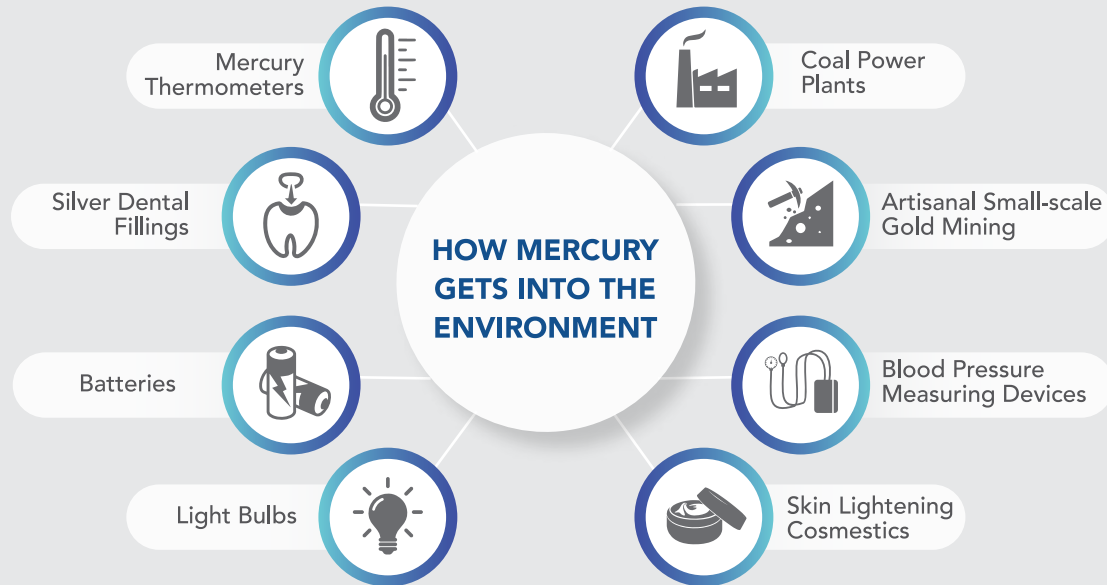
*ENVIRONMENTAL
SOLUTIONS FOR
MERCURY ANALYSIS*

ABOUT MERCURY & THE MINAMATA TREATY

Mercury is a toxic metallic element that poses serious health risks to our lungs, kidneys, nervous system, and more, while being especially concerning for the development of unborn children. Mercury exists in multiple forms: elemental (or metallic), typically found in air or gases; inorganic (e.g. mercuric chloride), typically found in water; and organic (e.g. methyl- and ethyl-mercury), which is commonly found in fish, each with different toxicity and pathways into our bodies.

WHAT IS MERCURY?

Mercury is a naturally occurring metal. When released into the environment, it can be toxic.



The primary sources of anthropogenic (human-related) mercury emissions include coal-fired power generation, residential heating systems, waste incinerators and the mining of mercury, gold & other metals. Once released into the environment, elemental mercury transitions into our water sources and naturally transforms into methylmercury that bioaccumulates in fish and shellfish. In the end, mercury makes its way into the air we breathe, the water we drink, and even the food that we eat.



Minamata Disease, also known as Mercury Disease, is a neurological syndrome caused by severe mercury poisoning. Signs and symptoms include ataxia, numbness in the hands and feet, general muscle weakness, loss of peripheral vision, and damage to hearing and speech. In extreme cases, insanity, paralysis, coma, and death follow within weeks of the onset of symptoms. A congenital form of the disease can also affect fetuses in the womb.

The first known case occurred in the 1950's on the island of Kyushu in Japan in the Yatsushiro Sea off the coast of Minamata City. Industrial mercury pollution in the Minamata Bay bioaccumulated in the fish and shellfish, which were consumed daily by the local inhabitants. Over 1,700 of the over 2,200 victims of this tragic event lost their lives, as well as many dogs, cats & other animals. In the wake of this tragedy, the local community also suffered through social and political issues in addition to long lasting economic effects.

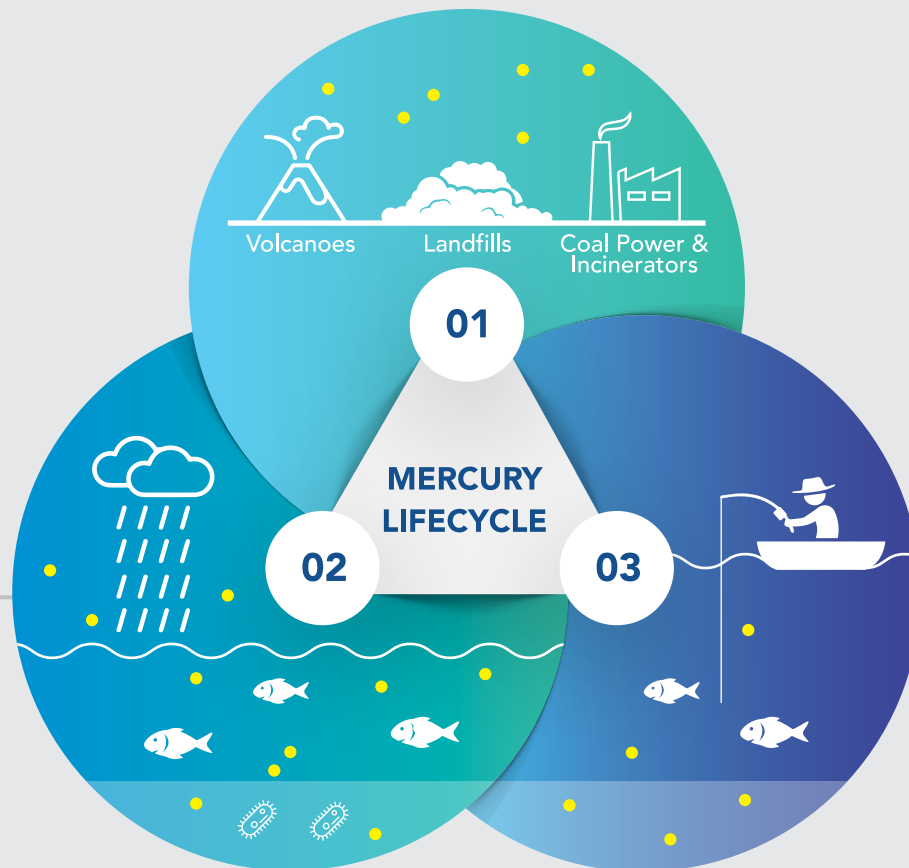
"Courtesy photo taken by W. Eugene Smith, Copyright belongs to Aileen Archive"

In October 2013, under the United Nations Environment Programme (UNEP), delegates from 128 countries gathered in Kumamoto, Japan to officially adopt and sign the "Minamata Convention on Mercury". The objective of the Minamata Convention is to protect human health and the environment from anthropogenic emissions and releases of mercury and mercury compounds. It contains provisions that relate to the entire life cycle of mercury, including controls and reductions across a range of products, processes and industries where mercury is used, released or emitted.

MERCURY SOURCES & LIFECYCLE

Mercury is released into the atmosphere, waters and land as a result of both anthropogenic (human-related) activities and natural sources such as volcanoes and erosion. Mercury in the atmosphere has the ability to travel for hundreds or thousands of miles, being transported around the world, where it is eventually deposited in the earth's soil, waters and plants. From there, mercury can be re-volatilized into the air, transported by rivers and streams, and absorbed into plant and animals that humans consume for food. For example, inorganic mercury in waters can be converted to methylmercury via microbial action. The methylmercury is then absorbed by small fish and shellfish. Larger fish consume the small fish, further concentrating the mercury within them through a process called bioaccumulation. It is highly important that we have an understanding of this global mercury lifecycle, so that we then understand how critical the monitoring and reduction of mercury emissions into our environment affect all life on earth.

Mercury vapor is released into our atmosphere.



Mercury can fall directly from the sky into water bodies. It also washes into our rivers, lakes, and streams via rain and snow runoff.

Mercury sinks harmlessly to the bottom until bacteria turn it into harmful methylmercury which is absorbed by animal tissue.

Concentrations in top predators such as steelhead and bass can trigger health advisories limiting fish consumption.

Small bottom feeders absorb traces of the toxin. As prey move up the food chain, the mercury becomes more and more concentrated.

Per the UNEP Global Mercury Assessment Report of 2015, the global inventory of mercury emissions to the atmosphere from anthropogenic sources was estimated to be 2,220 tons. Such emissions account for about 30% of the mercury emitted annually to the atmosphere. An additional 60% of the global mercury emissions are from other environmental processes, much of which involves recycling (or re-emission) of previously deposited anthropogenic mercury. The remaining 10% comes from natural resources such as volcanoes. This global inventory total does not include emission sources that cannot yet be reliably quantified. These unquantified sectors may add hundreds of tons of mercury to the actual emission totals.

As such, it is extremely crucial that we are able to reliably and accurately quantify mercury emissions & releases into every aspect of our environment (air, water & soil) with proven technologies and solutions. This is what drives Nippon Instruments Corporation to continuously advance & improve mercury analyzer technologies, and it's why we are The Global Leading Provider of Mercury Analyzers & Monitors.

SOLUTIONS FOR ATMOSPHERIC AIR & GASEOUS

Mercury emitted in flue gas from coal-fired plants or open-flame flares in petroleum refineries can drift through the air for hundreds or thousands of miles before depositing into our water and soil. This mercury is then directly absorbed or methylated, transferring the mercury into our food web.



WA-5 series

MODEL WA-5 FOR MERCURY IN AIR & GASES

Highly versatile, the WA-5 can be setup for "Grab-Tube Sampling" or fully automated, continuous sampling to measure Total Gaseous Mercury (TGM) in ambient air. An autosampler with 30 sample tube capacity is available to improve productivity. With your choice of Atomic Absorption and Atomic Fluorescence Spectroscopy detectors, the WA-5 complies with most regulatory methods for mercury in air, such as USEPA IO-5 (AF), ISO-20552 (AA or AF), EN-15852 (AA or AF) and more.



EMP-Gold+ series

MODEL EMP-GOLD+ FIELD PORTABLE MERCURY ANALYZER FOR AIR & GASES

Unique, battery-operated & field portable Gold-Amalgam Mercury Analyzer for measurement & monitoring of mercury in ambient air in remote locations or where electricity is not available. The EMP-Gold+ offers excellent sensitivity with accurate quantification for Total Gaseous Mercury (TGM) down to 4 ng/m³ in the field.



MA-3000 series

MODEL MA-3000 / MA-3 SOLO FOR MERCURY IN PASSIVE SAMPLERS

Passive samplers are an economical and practical method for collecting Total Gaseous Mercury (TGM) in several locations for mercury deposition mapping as well as remote or inaccessible locations. Rapid, accurate analysis of passive samplers can be performed by Direct Combustion Mercury Analyzers, the MA-3000 & MA-3 Solo, without the need for acidic digestion.



SOLUTIONS FOR OCCUPATIONAL HEALTH

Workers within industrial facilities may be exposed to mercury through inhalation or skin contact. They may also be exposed if a process, instrument or other apparatus containing mercury breaks, releasing mercury-containing dust, liquid or vapor. Long term exposure to mercury can have serious health effects. NIOSH requires employers to protect and monitor employees for mercury exposure on the job.



EMP-3 series

MODEL EMP-3 HANDHELD MERCURY SURVEY METER

Light-weight, compact, high-sensitivity mercury survey meter, allows direct real-time mercury measurements in the workplace, satisfying occupational hygiene and environmental safety guidelines like WHO, OSHA, NIOSH, ACGIH and more. Real-time results, which are highly crucial, in order to allow for quick decision making to minimize human exposure.



SOLUTIONS FOR INDUSTRIAL WASTES

Most industrial processes encounter mercury at some point in their processes or raw materials used in the process; it may be used as a component or be included in a finished product. As such, most industries are required to manage discharges to the environment. Improper handling and treatment can have devastating consequences to human & animal health, as well as what happened in Minamata Bay, Japan to understand the reality of



RA-5000 series

DIRECT PURGE, COLD VAPOR ATOMIC ABSORPTION

Cold Vapor Atomic Absorption Spectroscopy (CVAAS) is a sensitive analytical technique for trace level (sub-ppb) mercury analysis. All RA-series configurations are fully compliant with EPA methods 1631E, 1631F, 1631G, 1631H, 1631I, 1631J, 1631K, 1631L, 1631M, 1631N, 1631O, 1631P, 1631Q, 1631R, 1631S, 1631T, 1631U, 1631V, 1631W, 1631X, 1631Y, 1631Z, 1631AA, 1631AB, 1631AC, 1631AD, 1631AE, 1631AF, 1631AG, 1631AH, 1631AI, 1631AJ, 1631AK, 1631AL, 1631AM, 1631AN, 1631AO, 1631AP, 1631AQ, 1631AR, 1631AS, 1631AT, 1631AU, 1631AV, 1631AW, 1631AX, 1631AY, 1631AZ, 1631BA, 1631BB, 1631BC, 1631BD, 1631BE, 1631BF, 1631BG, 1631BH, 1631BI, 1631BJ, 1631BK, 1631BL, 1631BM, 1631BN, 1631BO, 1631BP, 1631BQ, 1631BR, 1631BS, 1631BT, 1631BU, 1631BV, 1631BW, 1631BX, 1631BY, 1631BZ, 1631CA, 1631CB, 1631CC, 1631CD, 1631CE, 1631CF, 1631CG, 1631CH, 1631CI, 1631CJ, 1631CK, 1631CL, 1631CM, 1631CN, 1631CO, 1631CP, 1631CQ, 1631CR, 1631CS, 1631CT, 1631CU, 1631CV, 1631CW, 1631CX, 1631CY, 1631CZ, 1631DA, 1631DB, 1631DC, 1631DD, 1631DE, 1631DF, 1631DG, 1631DH, 1631DI, 1631DJ, 1631DK, 1631DL, 1631DM, 1631DN, 1631DO, 1631DP, 1631DQ, 1631DR, 1631DS, 1631DT, 1631DU, 1631DV, 1631DW, 1631DX, 1631DY, 1631DZ, 1631EA, 1631EB, 1631EC, 1631ED, 1631EE, 1631EF, 1631EG, 1631EH, 1631EI, 1631EJ, 1631EK, 1631EL, 1631EM, 1631EN, 1631EO, 1631EP, 1631EQ, 1631ER, 1631ES, 1631ET, 1631EU, 1631EV, 1631EW, 1631EX, 1631EY, 1631EZ, 1631FA, 1631FB, 1631FC, 1631FD, 1631FE, 1631FF, 1631FG, 1631FH, 1631FI, 1631FJ, 1631FK, 1631FL, 1631FM, 1631FN, 1631FO, 1631FP, 1631FQ, 1631FR, 1631FS, 1631FT, 1631FU, 1631FV, 1631FW, 1631FX, 1631FY, 1631FZ, 1631GA, 1631GB, 1631GC, 1631GD, 1631GE, 1631GF, 1631GG, 1631GH, 1631GI, 1631GJ, 1631GK, 1631GL, 1631GM, 1631GN, 1631GO, 1631GP, 1631GQ, 1631GR, 1631GS, 1631GT, 1631GU, 1631GV, 1631GW, 1631GX, 1631GY, 1631GZ, 1631HA, 1631HB, 1631HC, 1631HD, 1631HE, 1631HF, 1631HG, 1631HH, 1631HI, 1631HJ, 1631HK, 1631HL, 1631HM, 1631HN, 1631HO, 1631HP, 1631HQ, 1631HR, 1631HS, 1631HT, 1631HU, 1631HV, 1631HW, 1631HX, 1631HY, 1631HZ, 1631IA, 1631IB, 1631IC, 1631ID, 1631IE, 1631IF, 1631IG, 1631IH, 1631II, 1631IJ, 1631IK, 1631IL, 1631IM, 1631IN, 1631IO, 1631IP, 1631IQ, 1631IR, 1631IS, 1631IT, 1631IU, 1631IV, 1631IW, 1631IX, 1631IY, 1631IZ, 1631JA, 1631JB, 1631JC, 1631JD, 1631JE, 1631JF, 1631JG, 1631JH, 1631JI, 1631JJ, 1631JK, 1631JL, 1631JM, 1631JN, 1631JO, 1631JP, 1631JQ, 1631JR, 1631JS, 1631JT, 1631JU, 1631JV, 1631JW, 1631JX, 1631JY, 1631JZ, 1631KA, 1631KB, 1631KC, 1631KD, 1631KE, 1631KF, 1631KG, 1631KH, 1631KI, 1631KJ, 1631KK, 1631KL, 1631KM, 1631KN, 1631KO, 1631KP, 1631KQ, 1631KR, 1631KS, 1631KT, 1631KU, 1631KV, 1631KW, 1631KX, 1631KY, 1631KZ, 1631LA, 1631LB, 1631LC, 1631LD, 1631LE, 1631LF, 1631LG, 1631LH, 1631LI, 1631LJ, 1631LK, 1631LL, 1631LM, 1631LN, 1631LO, 1631LP, 1631LQ, 1631LR, 1631LS, 1631LT, 1631LU, 1631LV, 1631LW, 1631LX, 1631LY, 1631LZ, 1631MA, 1631MB, 1631MC, 1631MD, 1631ME, 1631MF, 1631MG, 1631MH, 1631MI, 1631MJ, 1631MK, 1631ML, 1631MM, 1631MN, 1631MO, 1631MP, 1631MQ, 1631MR, 1631MS, 1631MT, 1631MU, 1631MV, 1631MW, 1631MX, 1631MY, 1631MZ, 1631NA, 1631NB, 1631NC, 1631ND, 1631NE, 1631NF, 1631NG, 1631NH, 1631NI, 1631NJ, 1631NK, 1631NL, 1631NM, 1631NN, 1631NO, 1631NP, 1631NQ, 1631NR, 1631NS, 1631NT, 1631NU, 1631NV, 1631NW, 1631NX, 1631NY, 1631NZ, 1631OA, 1631OB, 1631OC, 1631OD, 1631OE, 1631OF, 1631OG, 1631OH, 1631OI, 1631OJ, 1631OK, 1631OL, 1631OM, 1631ON, 1631OO, 1631OP, 1631OQ, 1631OR, 1631OS, 1631OT, 1631OU, 1631OV, 1631OW, 1631OX, 1631OY, 1631OZ, 1631PA, 1631PB, 1631PC, 1631PD, 1631PE, 1631PF, 1631PG, 1631PH, 1631PI, 1631PJ, 1631PK, 1631PL, 1631PM, 1631PN, 1631PO, 1631PP, 1631PQ, 1631PR, 1631PS, 1631PT, 1631PU, 1631PV, 1631PW, 1631PX, 1631PY, 1631PZ, 1631QA, 1631QB, 1631QC, 1631QD, 1631QE, 1631QF, 1631QG, 1631QH, 1631QI, 1631QJ, 1631QK, 1631QL, 1631QM, 1631QN, 1631QO, 1631QP, 1631QQ, 1631QR, 1631QS, 1631QT, 1631QU, 1631QV, 1631QW, 1631QX, 1631QY, 1631QZ, 1631RA, 1631RB, 1631RC, 1631RD, 1631RE, 1631RF, 1631RG, 1631RH, 1631RI, 1631RJ, 1631RK, 1631RL, 1631RM, 1631RN, 1631RO, 1631RP, 1631RQ, 1631RR, 1631RS, 1631RT, 1631RU, 1631RV, 1631RW, 1631RX, 1631RY, 1631RZ, 1631SA, 1631SB, 1631SC, 1631SD, 1631SE, 1631SF, 1631SG, 1631SH, 1631SI, 1631SJ, 1631SK, 1631SL, 1631SM, 1631SN, 1631SO, 1631SP, 1631SQ, 1631SR, 1631SS, 1631ST, 1631SU, 1631SV, 1631SW, 1631SX, 1631SY, 1631SZ, 1631TA, 1631TB, 1631TC, 1631TD, 1631TE, 1631TF, 1631TG, 1631TH, 1631TI, 1631TJ, 1631TK, 1631TL, 1631TM, 1631TN, 1631TO, 1631TP, 1631TQ, 1631TR, 1631TS, 1631TT, 1631TU, 1631TV, 1631TW, 1631TX, 1631TY, 1631TZ, 1631UA, 1631UB, 1631UC, 1631UD, 1631UE, 1631UF, 1631UG, 1631UH, 1631UI, 1631UJ, 1631UK, 1631UL, 1631UM, 1631UN, 1631UO, 1631UP, 1631UQ, 1631UR, 1631US, 1631UT, 1631UU, 1631UV, 1631UW, 1631UX, 1631UY, 1631UZ, 1631VA, 1631VB, 1631VC, 1631VD, 1631VE, 1631VF, 1631VG, 1631VH, 1631VI, 1631VJ, 1631VK, 1631VL, 1631VM, 1631VN, 1631VO, 1631VP, 1631VQ, 1631VR, 1631VS, 1631VT, 1631VU, 1631VV, 1631VW, 1631VX, 1631VY, 1631VZ, 1631WA, 1631WB, 1631WC, 1631WD, 1631WE, 1631WF, 1631WG, 1631WH, 1631WI, 1631WJ, 1631WK, 1631WL, 1631WM, 1631WN, 1631WO, 1631WP, 1631WQ, 1631WR, 1631WS, 1631WT, 1631WU, 1631WV, 1631WW, 1631WX, 1631WY, 1631WZ, 1631XA, 1631XB, 1631XC, 1631XD, 1631XE, 1631XF, 1631XG, 1631XH, 1631XI, 1631XJ, 1631XK, 1631XL, 1631XM, 1631XN, 1631XO, 1631XP, 1631XQ, 1631XR, 1631XS, 1631XT, 1631XU, 1631XV, 1631XW, 1631XX, 1631XY, 1631XZ, 1631YA, 1631YB, 1631YC, 1631YD, 1631YE, 1631YF, 1631YG, 1631YH, 1631YI, 1631YJ, 1631YK, 1631YL, 1631YM, 1631YN, 1631YO, 1631YP, 1631YQ, 1631YR, 1631YS, 1631YT, 1631YU, 1631YV, 1631YW, 1631YX, 1631YY, 1631YZ, 1631ZA, 1631ZB, 1631ZC, 1631ZD, 1631ZE, 1631ZF, 1631ZG, 1631ZH, 1631ZI, 1631ZJ, 1631ZK, 1631ZL, 1631ZM, 1631ZN, 1631ZO, 1631ZP, 1631ZQ, 1631ZR, 1631ZS, 1631ZT, 1631ZU, 1631ZV, 1631ZW, 1631ZX, 1631ZY, 1631ZZ

RA-5000A-Series

Economical, entry-level configuration with m

RA-4000A-Series

High-throughput trace-level CVAAS mercury analysis methods and permits. Available with an 80-position unique all-in-one, fully automated 80-position (RA-4500A).



RA-4000 series

DIRECT-PURGE, COLD VAPOR ATOMIC ABSORPTION

Completely automated solution for ultra-trace mercury analysis, meeting the most stringent regulatory methods such as USEPA 1631E & 1631F. The innovative & unmatched capability to automatically perform completely automated operation combined with HEPA/Carbon filtered cabinet. Ultra-trace mercury analysis.



RA-4300FG+ series

MODEL MA-3000 / MA-3 SOLO DIRECT PURGE

Mercury analysis by direct combustion, gold-standard, effective and versatile technique to accurately measure mercury without the need for sample preparation. USEPA approved mercury in environmental sample types by this method.



MA-3000 series

MA-3 Solo-Series

Economical & portable, the MA-3 Solo is small and compact, but it is big on performance with a variety of manual sample introduction, and yet it has the capability to analyze with ease.



MA-3000 3-in-1 Combination

MA-3000-Series

Largest available autosampler for any direct mercury analysis. Accurate and unattended mercury analysis of samples with a wide measurement range with integrated auto-sampler. Versatile options for the addition of CVAAS and

the operation. The mercury may come from the natural as a catalyst or critical component of a process; or it may required to monitor and report the mercury in their waste amount of mercury in these industrial processes could lead to us to our global environment. We only need to see what this issue.

ABSORPTION SPECTROSCOPY MERCURY ANALYZER

py (CVAAS) is a well-known and reliable mercury analysis mercury analysis. The NIC RA-series offers multiple CVAAS requirements for sample throughput, automation and investment. tant with regulatory test methods & permits, such as USEPA EN-1483, ISO-17846, ASTM D3223, JIS K0102 and more.

modular upgrade capability to increase automation.

analyzer that surpasses the requirements of most regulatory -position automated system for analysis (RA-4300A) or the tion in-situ acid digestion and analysis mercury analyzer

FLUORESCENCE SPECTROSCOPY MERCURY ANALYZER

trace (sub-ppt) mercury analysis by CVAFS according to 245.7, EN-1483, ISO 17852 and more. The RA-4300FG+ offers automatically add oxidation, quenching & reduction reagents for with the NIC direct purge technology within a fully enclosed mercury analysis has never been easier.

MERCURY ANALYZERS FOR SOLID & LIQUID WASTES

amalgamation and atomic absorption spectroscopy is a highly measure mercury in just about any solid or liquid sample matrix EPA 7473 is the most common reference method for measuring technique.

in size, only occupying the bench space of a standard sheet of ast range of available applications. The MA-3 Solo has single, e capability to measure a wide range of solids, liquids & gases

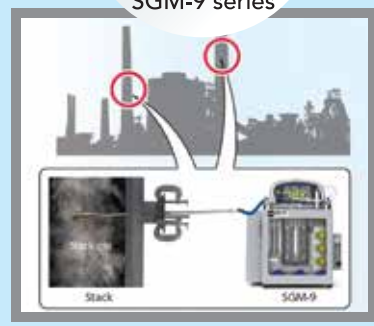
mercury analyzer with 100 sample capacity that allows for quick, solid & liquid sample types. Standard dual-cell optics allows for a -blanking features to further enhance the unattended operation. d gas measurement are available.

SOLUTIONS FOR EMISSIONS

One of the largest anthropogenic sources of mercury in our environment cor flue gas emissions. As such, it is highly critical that these emissions are continuously monitored for mercury content but also accurately quan understand the environmental impacts.



SGM-9 series



MODEL SGM-9 MERCURY MONITOR IN FLUE GASES

Compact, portable, reliable & accurate mo system for measuring mercury in flue gases in re The SGM-9 is designed as a temporary, r monitoring system to be used for reference process optimization, research & more. Using handheld CVAAS mercury monitor combined NIC pre-treatment system, each SGM-9 system ability to directly measure total gaseous mercur or elemental mercury.

With a dual-SGM-9 configuration, the ab accurately & continuously perform mercury sp measurements is added. One system directly m total gaseous mercury, the second system measures elemental mercury, and the oxidized is calculated from these results in real-time.

$$Hg^{2+} = THg - Hg^0$$

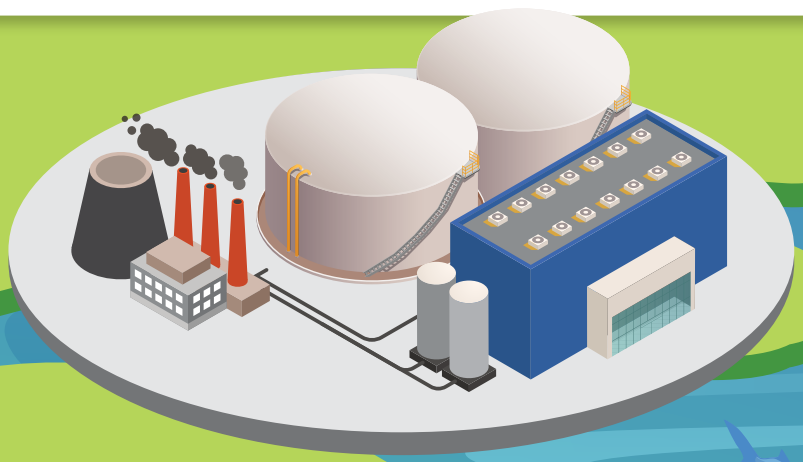


MA-3000 series



MODEL MA-3000/MA-3 SOLO FOR MERCURY IN SORBENT TRAP ANALYSIS

Sorbent traps are an alternative proced continuous emission monitoring that require lab analysis of the sorbent trap materials to quanti mercury collected over time. Accurate measure critical, as the final measurement is used to qua mercury content from a very large volume of f The MA-3000 and MA-3 Solo Mercury Analy both accurately and quickly measure the me these sorbent traps without any sample prepar



SOLUTIONS FOR NATURAL RESOURCES, MERCURY RESEARCH & MORE

Mercury can be found everywhere in our environment, so it is common to find researchers measuring mercury in ambient air, rain, snow, lakes, rivers, our oceans, soil, plants, animals & more. If not minimized, mercury will pollute our natural resources, infiltrating our food sources through the air, soils and waters used for agriculture and aquaculture as well as through its uptake in fish and shellfish. Research for mercury in the environment often uses a specific species of plant, animal or insect as an Environmental Indicator. A high level of accuracy is required for such ultra-trace (sub-ppt) mercury analysis, as the sample sizes of Environmental Indicators are often small while the potential impact of the results may be critical to human health.



RA-4300FG+
series

MODEL RA-4300FG+ DIRECT-PURGE, COLD VAPOR ATOMIC-FLUORESCENCE SPECTROSCOPY MERCURY ANALYZER

Completely automated solution for ultra-trace (sub-ppt) mercury analysis by CVAFS according to regulatory methods such as USEPA 1631E & 245.7, EN-1483, ISO 17852 and more. The RA-4300FG+ offers the innovative & unmatched capability to automatically add oxidation, quenching & reduction reagents for completely automated operation combined with the NIC direct purge technology within a fully enclosed HEPA/Carbon filtered cabinet. Ultra-trace mercury analysis has never been easier.



MA-3000
series

MODEL MA-3000 / MA-3 SOLO DIRECT MERCURY ANALYZERS FOR SOLIDS & LIQUIDS

Many researchers also find the need to measure mercury in a diverse range of sample types, such as feathers, eggs, adsorbents, fish tissues, hair, fingernails & more. Direct mercury analysis is the ideal technique for trace (sub-ppb) mercury in a wide range of sample types without the need for sample preparation...just load the samples and go, the NIC MA-3000 or MA-3 Solo will do the rest.

...ure to
...oratory
...itate the
...ement is
...ntify the
...lue gas.
...zers can
...ercury in
...ation.

...mes from
...not only
...tified to

...onitoring
...eal time.
...eal-time
...esting,
...the NIC
...with the
...has the
...y (TGM)

...bility to
...eciation
...measures
...directly
...mercury

...ure to
...oratory
...itate the
...ement is
...ntify the
...lue gas.
...zers can
...ercury in
...ation.





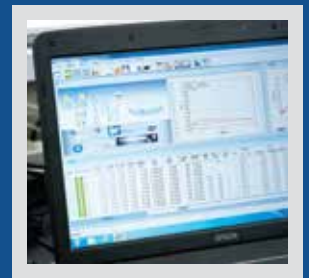
NIPPON INSTRUMENTS CORPORATION

Leading In Innovation



Nippon Instruments Corporation (NIC), the global leader in Mercury Analyzer automation and instrumentation, commercialized the world's first direct thermal decomposition Mercury Analyzer back in the 1970s'. Since that time, we have continued to develop, sell and install a vast range of Mercury Analyzers and customized solutions around the world for regulatory agencies and institutions, universities, research groups, oil & gas refineries, petrochemical industries, food providers, biology & toxicology science groups and more.

Thanks to our strong R&D capacities and technological innovations, NIC is the driving force in the Mercury Analyzer market, setting the standards for functional scope and user-friendliness. With a dense network of knowledgeable sales partners and qualified service partners we provide scientifically sound and environmentally responsible solutions for our customers around the globe.



NIPPON INSTRUMENTS CORPORATION

📍 14-8 Akaoji-cho, Takatsuki-shi, 569-1146 Osaka, Japan

☎ +81 72 694 5195

🖨 +81 72 694 0663

✉ info-nic@rigaku.co.jp

🌐 www.hg-nic.com

